



INNOVATION PROJECT

INSPECTILUS

TEAM

JEROEN STIJVEN



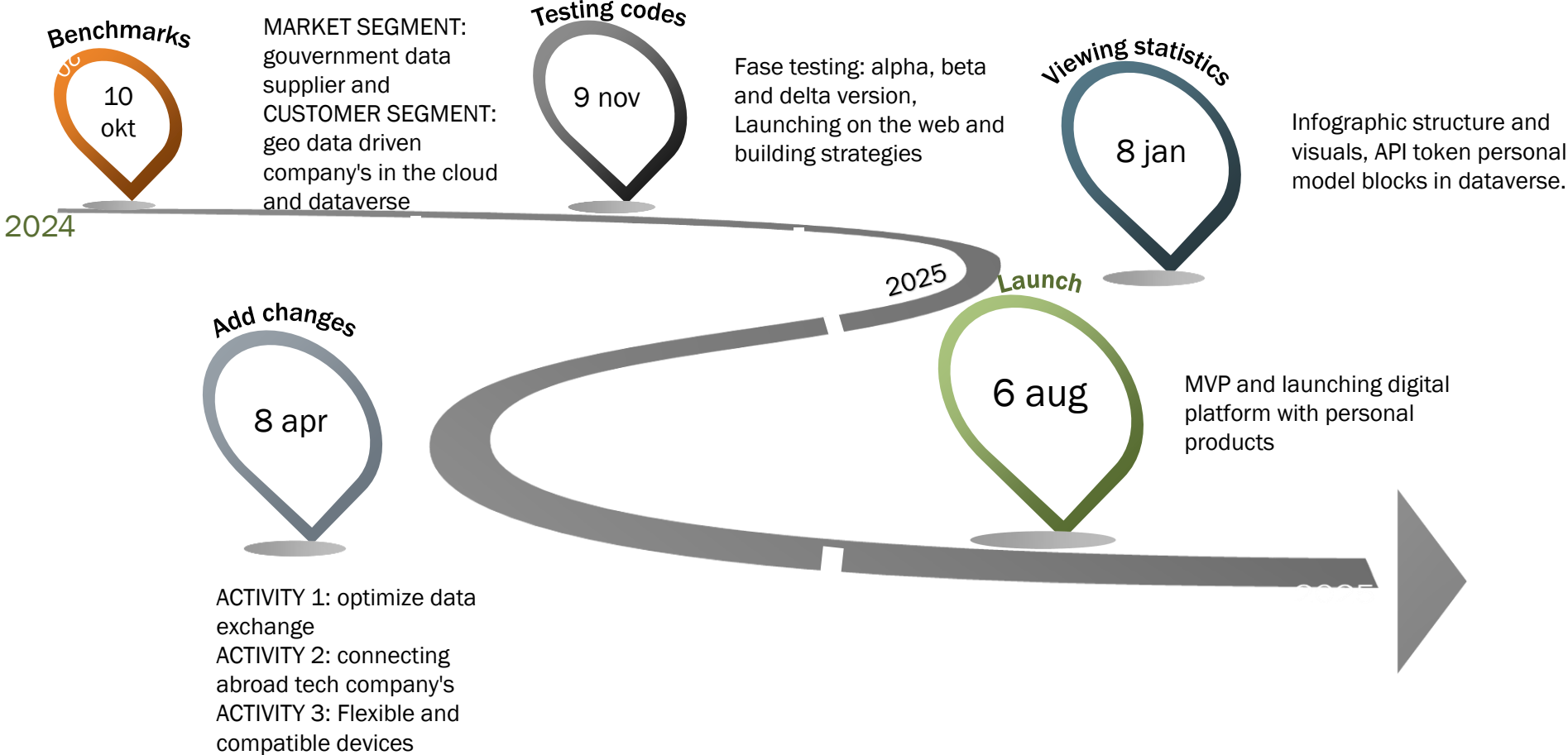
JORAN



JORRIT

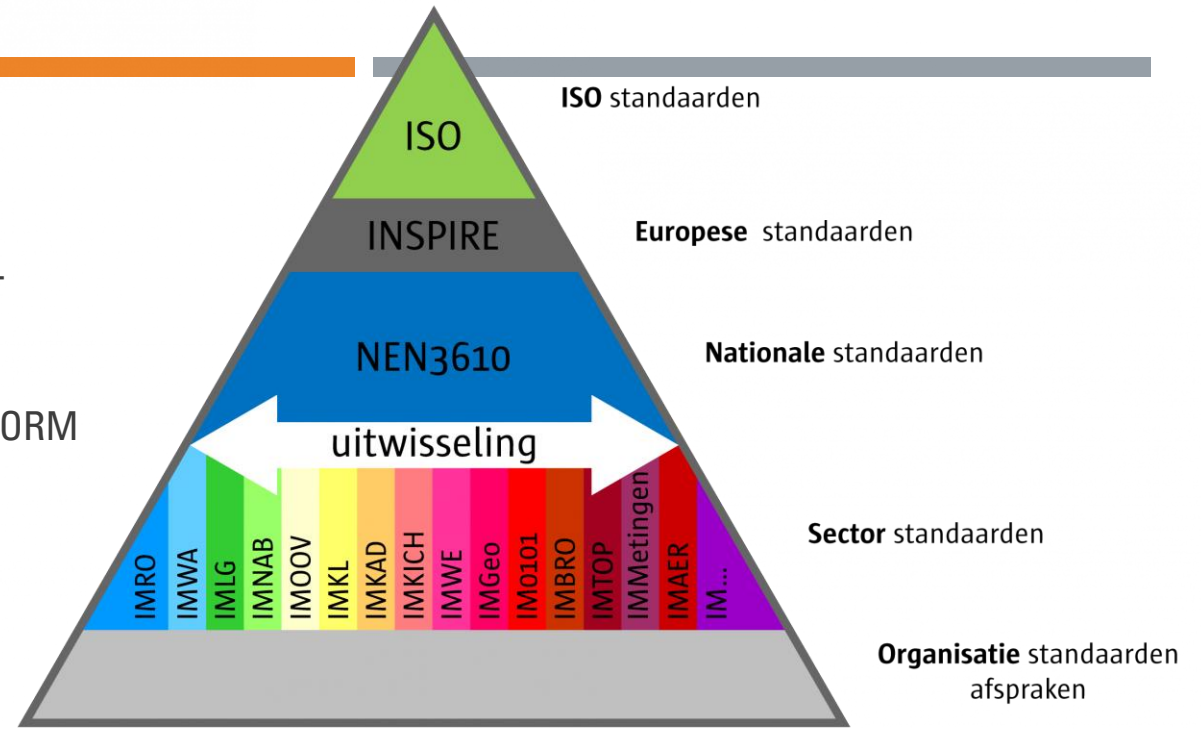


MARKET ROADMAP



MILESTONES & VALUES

- OPEN SOURCE → TANGIBLE → YOUR OWN HOST
- DATA EXCHANGE
- TODAY 500K USERS → OPEN SOURCE GEO PLATFORM
- 5 MILJOEN USERS → IN 1 YEAR
- 500K INVESTMENT
- ALMOST 20 BIJJOEN EURO TOTAL INDUSTRY IN THE YEAR 2020 ONLY IN EUROPE



The screenshot shows a web application interface for 'stijvenjeroen / Fiberklaar'. The interface includes a navigation menu on the left with options like Overview, Files, Changes, Collaborators, Jobs, Secrets, and Settings. The main content area has an 'About' section, a '0 people involved' section, and a '1 project' section. A central map shows a geographical area with 'API Key Required' labels. On the right, there is a 'DataPlotly' chart and a 'Toolbox Processing' panel with various GIS tools.

SIMPLIFY WITH PROTOCOL

GEO SYSTEMS AND DATA FORMATS

RESULTS: POSSIBILITIES

83.574.402.912 (2D)
22.004.136 (3D)

NOT YET:

PLATFORMS

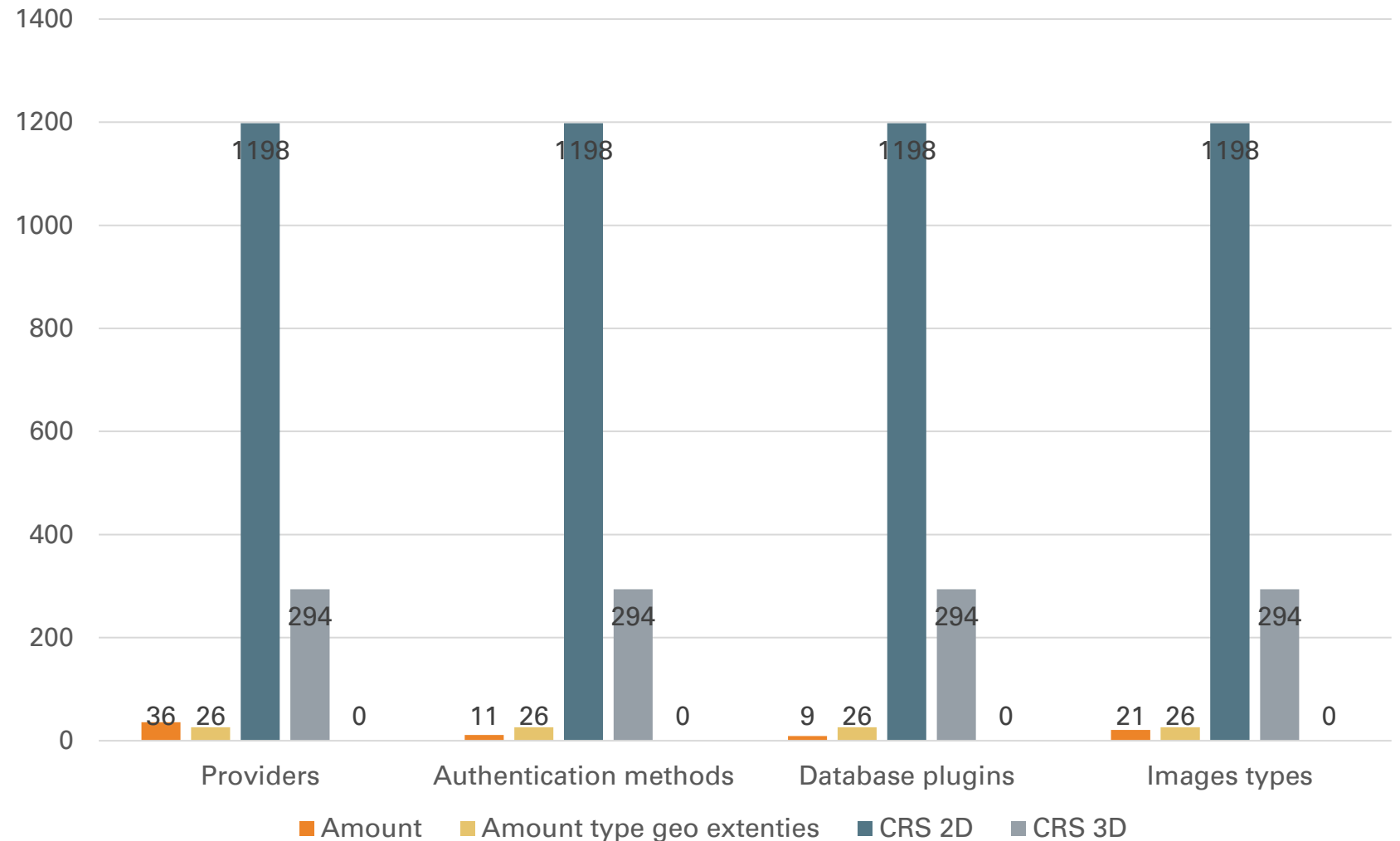
APPLICATIONS

DOCUMENT SOURCES

DEVICES

CODE LANGUAGES

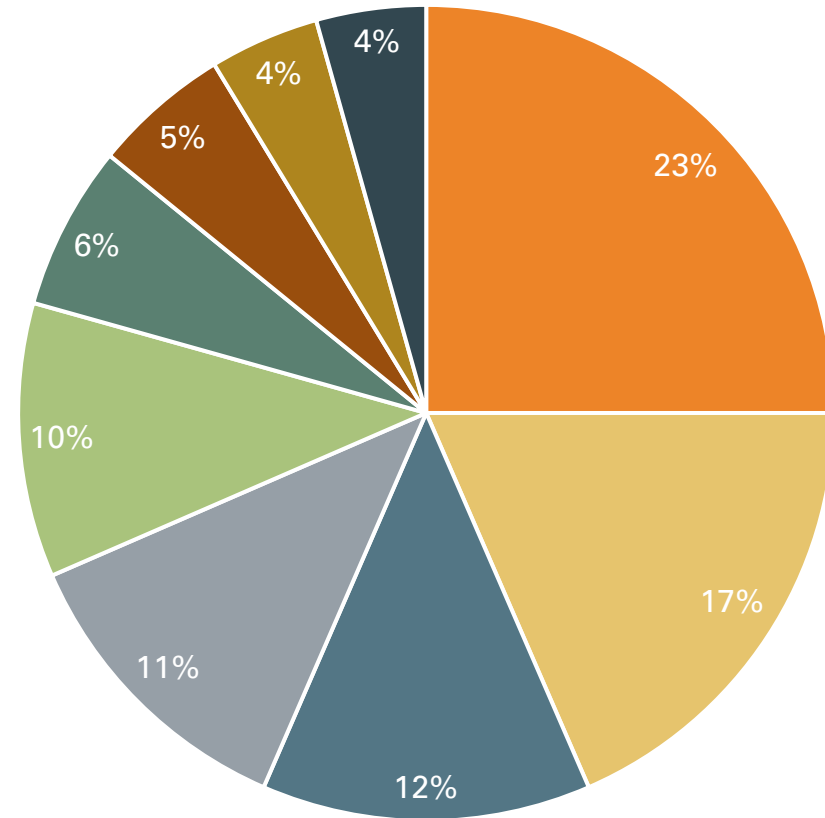
10275 DATASETS IN FLANDERS



DATA SPACE

- POLICY & POLITICS
- LAW
- INVESTMENTS
- ECONOMY
- EQUALITY
- JUSTICE FOR ALL
- **TRUST**

- Smart city
- Connected industry
- Connected building
- Connected cars
- Smart energy
- Smart health
- Smart supply chain
- Smart agriculture
- Smart retail



GEOSPATIAL PLATFORM

- Asset management
- Supply chain
- Smart contracts
- Ownership
- Digital asset

← Geospatial Resource Platform



Global

Asia-Pacific

Africa

Europe

Middle East

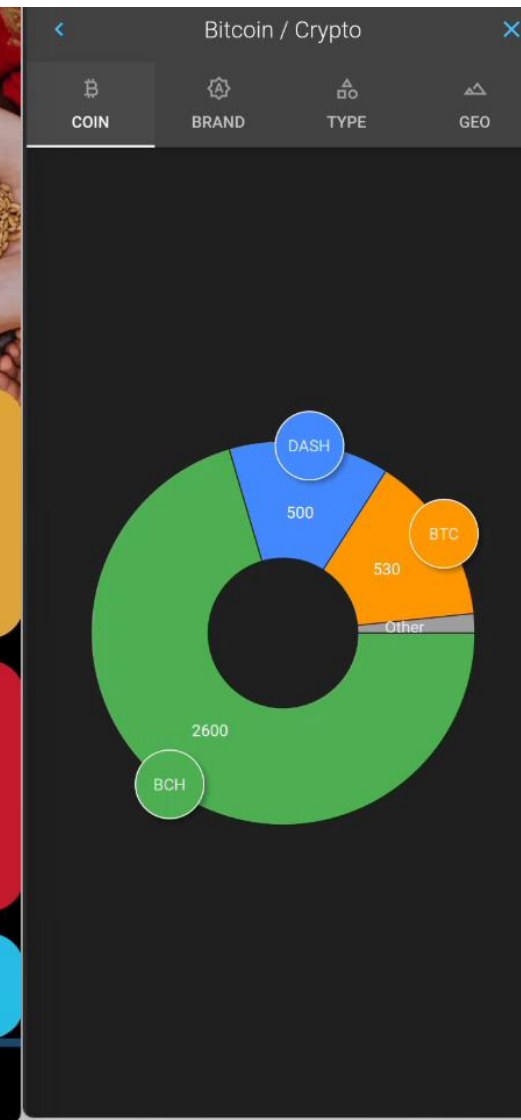
North America

Company Profile
750+

User Profile
900+

Case Studies
250+

Contact us



Global trade precious metals and gemstones

The global trade networks for various precious metals and stones in 2022. Each node is connected to its two largest partners of the selected product. Its size corresponds to the product's total trade volume. Click on the nodes or go to the product page for detailed information.

Network Tables About

data on

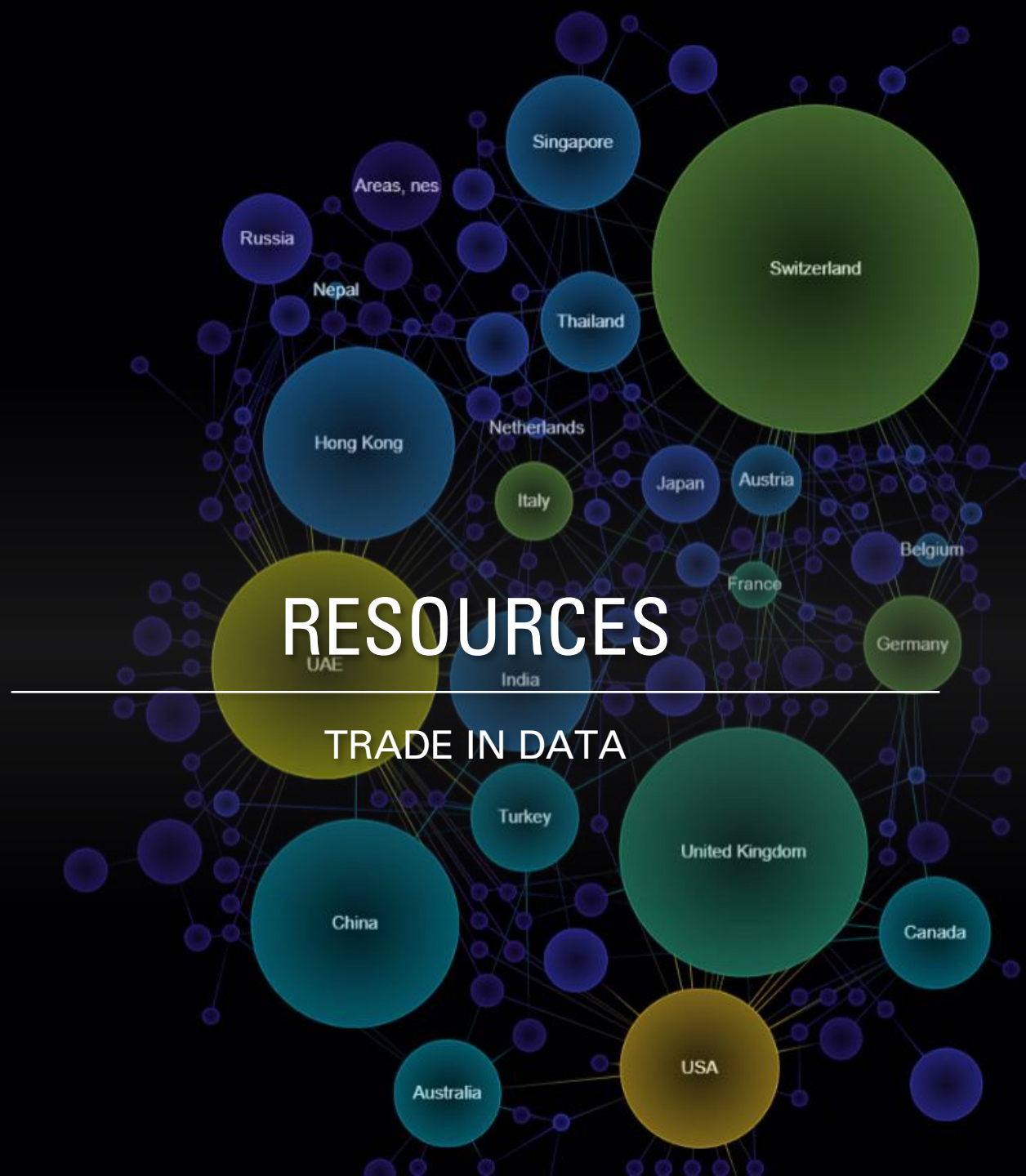
select a country

select...

select the countries by

select the Links Number

trade links number max



Country Hovered

France

Country Clicked

Export

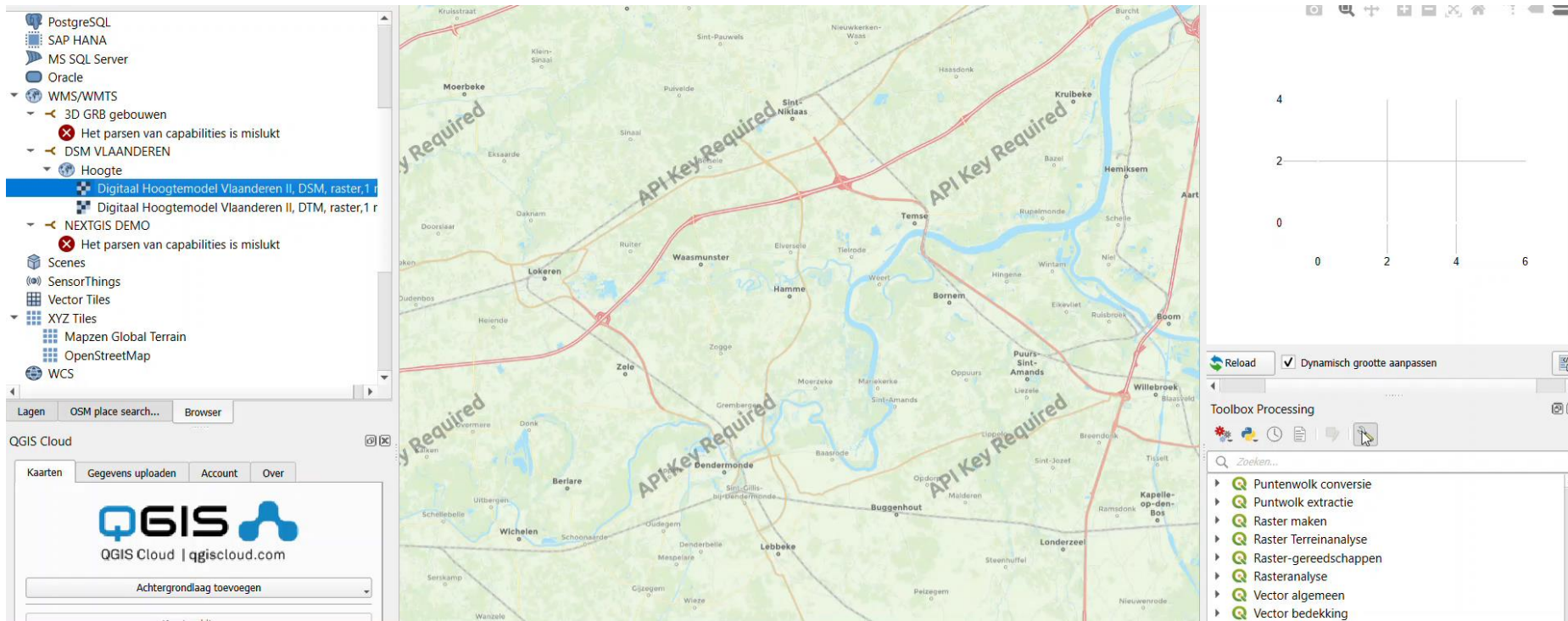
Country Data Importers

Import

Country Data Exporters

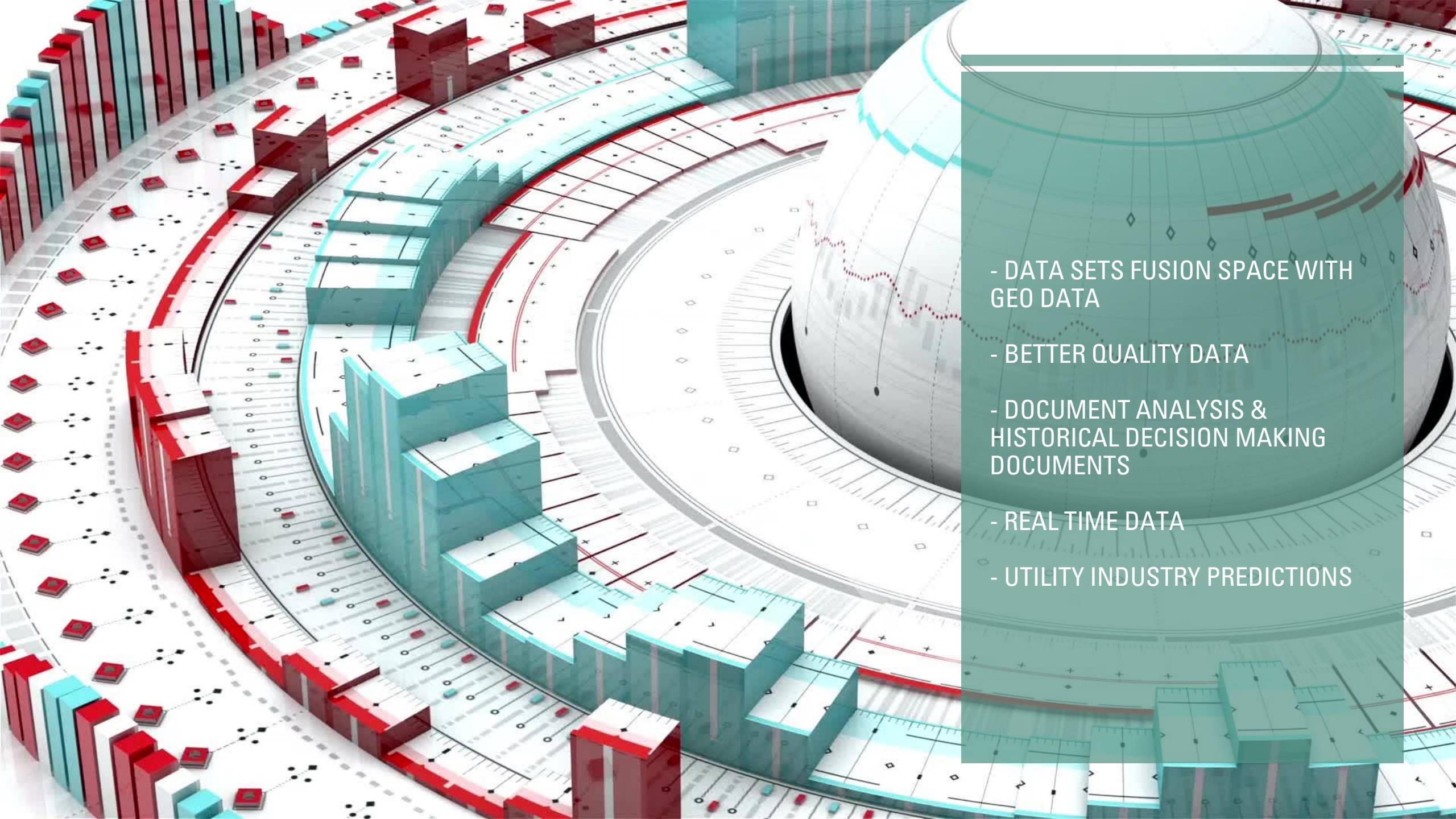
Key Suppliers

Key Supplier To



DEMO PROTOTYPE

■ DATASPACE



- DATA SETS FUSION SPACE WITH
GEO DATA

- BETTER QUALITY DATA

- DOCUMENT ANALYSIS &
HISTORICAL DECISION MAKING
DOCUMENTS

- REAL TIME DATA

- UTILITY INDUSTRY PREDICTIONS

HOW ?

CONNECTION
AND
COMMUNICATION
BETWEEN
DATASETS WITH
ML MODELS

BY VALIDATION
AND LOG
SYSTEMS TO
DETECT
MANIPULATION
OF DATA

SATELLITE AND
DATABASE IN
WEB 3
WITH
- AI
- IOT
-DISTRIBUTE
LEDGER

FUNCTIONALITY	API MARKETPLACE	FREE PLAN	FREE TRIAL	OPEN SOURCE
YES	YES	YES	YES	YES
COMPATIBLE DEVICES	ONLINE/OFFLINE	FREE ACCOUNT	30 DAYS TRIAL	DIGITAL ASSETS

TOKEN PERSONAL BLOCK PRICES

The screenshot displays the QGIS desktop environment. On the left, the 'Layers' panel is active, showing a list of layers including 'OpenStreetMap', 'GEBOUWEN BESTEMMING', 'GROND BESTEMMING', 'Land-use', 'Samengevoegde laag', 'OUTPUT — Buildings', 'OUTPUT — Land-use', 'Coastlines', 'Settlements', 'Administrative boundaries', 'Administrative boundaries - land', and 'Points of interest'. Below this, the 'QGIS Cloud' section shows a 'Databank' dropdown and a table of layers.

Layers	Table Schema	Table name
OUTPUT — ...	▼	output_?_buildings
OUTPUT — JT - ...	▼	utput_?_land_use
irpc ts	▼	irports
Airports	▼	airports
dm iis ativ ...	▼	adm nistrative_b uida es

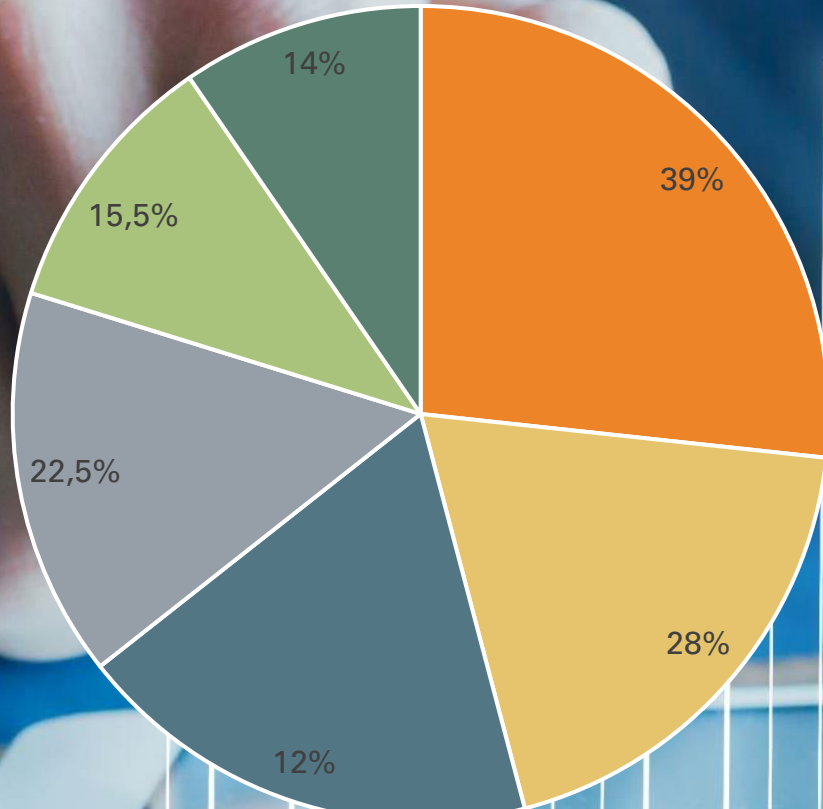
The central map shows a geographical area in Belgium, with various roads and settlements visible. The right side of the interface features a 'Toolbox Processing' section with a search bar and a list of processing tools such as 'Recent gebruikt', '3D-tegels', 'Cartografie', 'Database', 'Gereedschappen voor bestanden', 'Gereedschappen voor lagen', 'GPS', 'Interpolatie', 'Mazen', 'Netwerkanalyse', 'Plots', and 'Puntenwolk beheer'. Above the toolbox, there is a code editor window displaying JavaScript code for a Plotly chart.

```

<head><meta charset="utf-8" /><script src="file:///C:/Users/jeroe/
Roaming/QGIS/QGIS3/profiles/default/python/plugins/DataPlotly/jssc
polyfill.min.js"></script><script src="file:///C:/Users/jeroe/AppData/
QGIS3/profiles/default/python/plugins/DataPlotly/jsscripts/plotly-1.52
script"></head><div>
  <div
id="aab37c5c-50d6-482a-917c-006b7f183ba2" class="plotly-graph-di
100%; width:100%;"></div>
  <script type="text/javascript">
window.PLOTLYENV=window.PLOTLYENV || {};
(document.getElementById("aab37c5c-50d6-482a-917c-006b7f183ba
Plotly.newPlot(
  "aab37c5c-50d6-482a-917c-006b7f18
[{"customdata":[""],"hoverinfo":"all","ids":[],"line":{"dash":"solid","wi
1.0},"marker":{"color":"#8ebad9","colorbar":{"len":0.8},"colorscale":
[[0.0,"rgb(255,255,255)],[0.125,"rgb(240,240,240)],[0.25,"rgb(217
[0.375,"rgb(189,189,189)],[0.5,"rgb(150,150,150)],[0.625,"rgb(115
[0.75,"rgb(82,82,82)],[0.875,"rgb(37,37,37)],[1.0,"rgb(0,0,0)"]],"lir
{"color":"#1f77b4","width":1.0},"reversescale":false,"showscale":fals
10.0,"symbol":0},"mode":"markers","name":"","opacity":1.0,"text":[]
center","x":[],"y":[],"type":"scatter"}, {"legend":
{"orientation":"v"},"paper_bgcolor":"rgb(255,255,255)","plot_bgcolor
5"},"showlegend":true,"template":{"data":{"barpolar":{"marker":{"lir
{"color":"#E5ECF6","width":0.5},"pattern":{"fillmode":"overlay","size"
0.2},"type":"barpolar"},"bar":{"error_y":{"color":"#2a3f5f"},"error
{"color":"#2a3f5f"},"marker":{"line":{"color":"#E5ECF6","width":0.5}

```

CHALLENGES



- Cybersecurity & privacy
- Knowledge & skills of employees
- Financial assets
- Unknown ROI
- Lack of technological standards on devices
- Lack of good business cases
-

RESULT:

- UPSCALING SAFETY AND TRUST OF DATA SHARING
- ACTION OF DECISION MAKING
- INTELLECTUAL PROPERTY